

# SRP · RLP · RLM

## SHUT HEIGHT COUNTER (upper/lower limit output) ADJUSTING DIE HEIGHT OF PRESS MACHINE PANEL MOUNTING



### APPLICATIONS

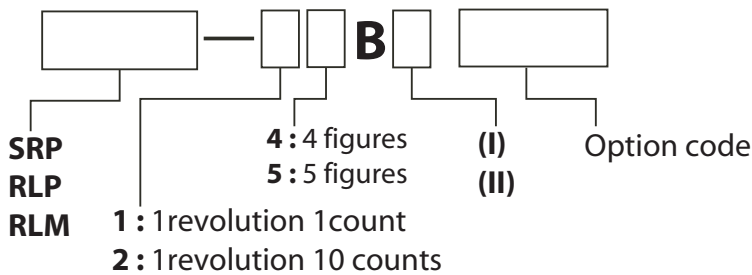
PRESS MACHINE AND VARIETY OF INDUSTRIAL MACHINES.

### TYPES OF REVOLUTION

Looking from the top of the shaft (looking from the rear).

- (I) Adds for every clockwise rotation of main shaft (The direction of arrow).  
Subtracts for counterclockwise rotation.
- (II) Adds for every counterclockwise rotation of main shaft (The opposite direction of arrow).  
Subtracts for clockwise rotation.

### SELECTION OF MODEL NUMBER



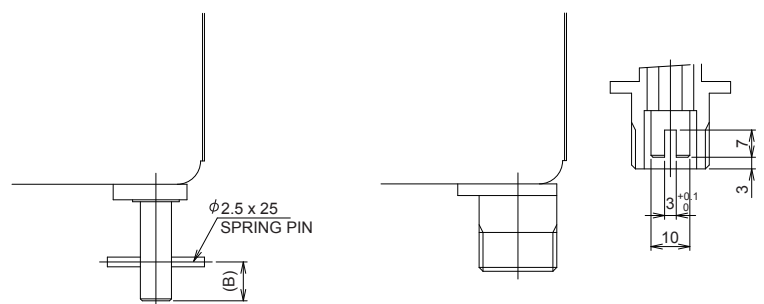
### SPECIFICATIONS

Model	Digits	Figure Size	Revolution / Count	Maximum Speed	Microswitch capacity	Preset Digits
SRP-14B	4	6.2 x 4.5mm	1 / 1	1000 rpm	AC250V-11A DC125V-1/2A	Upper 3 digits
SRP-15B	5	6.2 x 4.5mm	1 / 1	1000 rpm	AC250V-11A DC125V-1/2A	Upper 4 digits
SRP-24B	4	6.2 x 4.5mm	1 / 10	500 rpm	AC250V-11A DC125V-1/2A	Upper 3 digits
SRP-25B	5	6.2 x 4.5mm	1 / 10	500 rpm	AC250V-5A DC125V-1/2A	Upper 4 digits
RLP-24B	4	8.0 x 5.5mm	1 / 10	300 rpm	AC250V-11A DC125V-1/2A	Upper 3 digits
RLP-25B	5	8.0 x 5.5mm	1 / 10	300 rpm	AC250V-11A DC125V-1/2A	Upper 4 digits
RLM-14B	4	8.0 x 6.3mm	1 / 1	1500 rpm	AC250V-11A DC125V-1/2A	Upper 3 digits
RLM-15B	5	8.0 x 6.3mm	1 / 1	1500 rpm	AC250V-11A DC125V-1/2A	Upper 4 digits
RLM-25B	5	8.0 x 6.3mm	1 / 10	300 rpm	AC250V-11A DC125V-1/2A	Upper 4 digits

Operating Temperature	-5°C - +40°C	Operating Humidity	85%RH maximum	Remarks	Non-Freezing, Non-Condensing
-----------------------	--------------	--------------------	---------------	---------	------------------------------

### OPTIONAL SPECIFICATIONS

- Please inform length of shaft and cable.
- Body color is selectable.
- Connection for Flexible shaft is available.
- Shaft with spring pin is available.
- Without output is available.

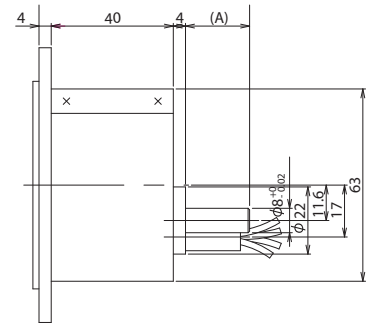
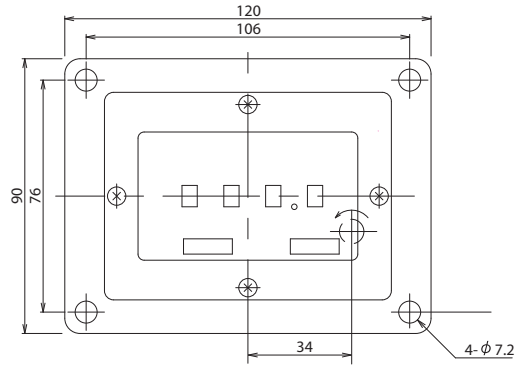


With Spring pin

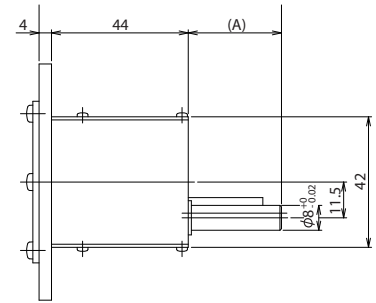
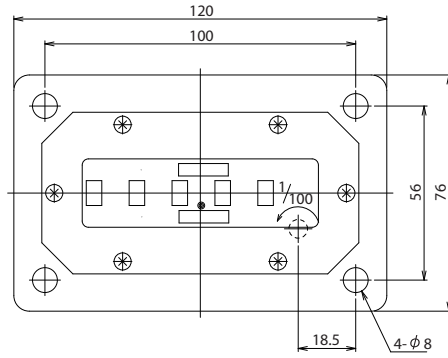
Connection for Flexible shaft

# DIMENSIONS

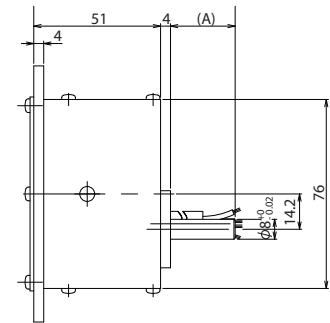
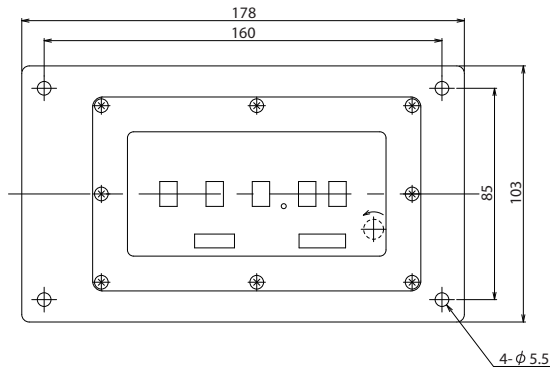
SRP-14B (I)  
SRP-14B (II)



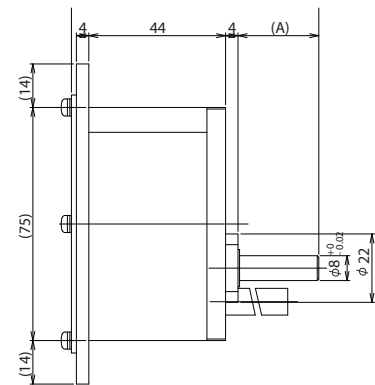
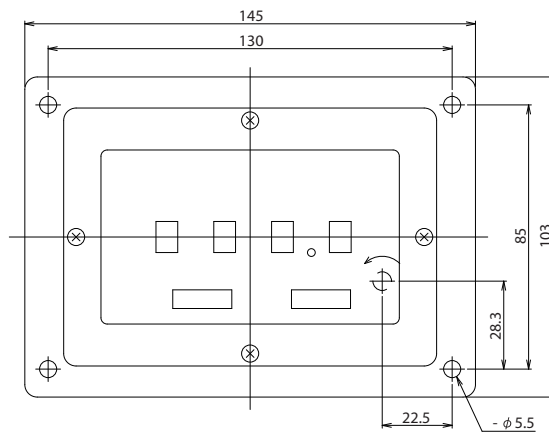
SRP-25B(I)  
SRP-25B (II)



RLP-25B (I)  
RLP-25B (II)

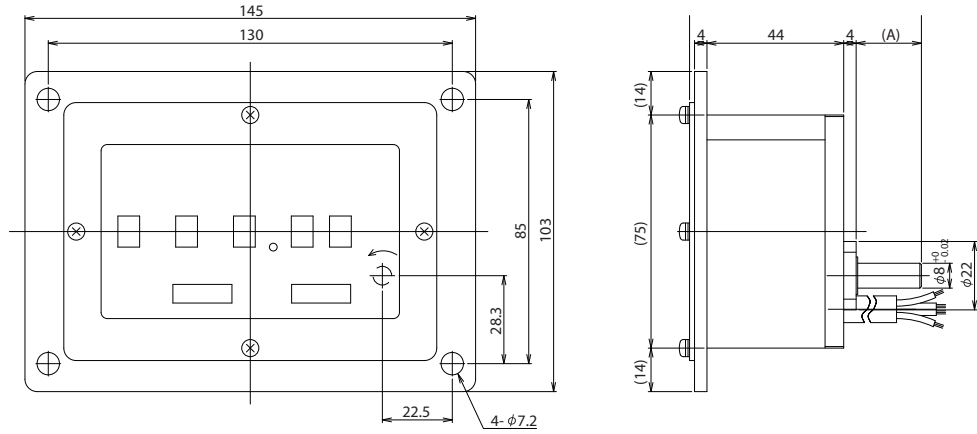


RLM-14B (I)  
RLM-14B (II)



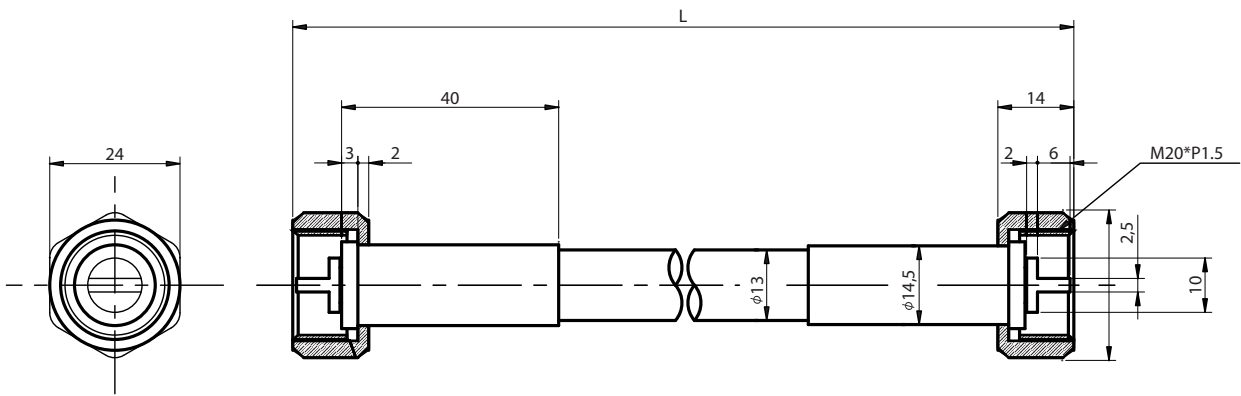
## DIMENSIONS

RLM-25B (I)  
RLM-25B (II)



Flexible Shaft (Option)

Model : GE-16 L=□□□□ mm



Rotation speed: 800 - 1000rpm  
Minimum bending radius: 120mm  
Maximum clamping torque of nut: 5Nm (50Kg-cm)

This catalog was last revised Nov. 1, 2015.  
\*Subject to change without prior notice.  
All Rights Reserved, Copyright © 2015, LINE SEIKI CO., LTD.



**LINE SEIKI CO., LTD.**

Address : 37-7, Chuo-Cho, 2-Chome, Meguro-ku  
Tokyo 152-0001 JAPAN  
Contacts : Tel: +81-3-3716-5151 Fax: +81-3-3710-4552  
E-mail: webtrades@line.co.jp  
URL : <http://www.lineseiki.com>