

RCP SERIES



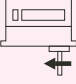
LINE SEIKI

MECHANICAL PRESET COUNTER



- REVOLUTION / DIRECT DRIVE TYPE
- 5 DIGIT DISPLAY / 1 LEVEL PRESET
- ADD COUNTER
- BUILT-IN MICROSWTICH
- EASY PRESETTING
- MANUAL RESET

■ MODEL SELECTION

TYPE	DIGITS	COUNT METHOD			
			TYPE I Top Going	TYPE II Top Coming	TYPE A Anti-Clockwise
			Manual Reset	Manual Reset	Manual Reset
REVOLUTION (1 count / rev)	5	ADD	RCP - 15 (I)	RCP - 15 (II)	RCP - 15 A
DIRECT DRIVE (10 counts / rev)		ADD	RCP - 25 (I)	RCP - 25 (II)	RCP - 25 A

■ SPECIFICATIONS

Display	Count Display - 4.3 x 2.5mm (White on Black Background) Preset Display - 3.0 x 1.6mm (Yellow on Black Background)
Preset Range	1 - 99999
Starting Torque	Revolution : 0.010N m (102gf-cm) Direct Drive : 0.020N m (204gf-cm)
Count Speed	Revolution : 5000 revolution / min. max. Direct Drive : 500 revolution / min. max.
Output	Microswitch - Type 1C (AC250V 10A max.)
Reset	Push Button
Operating Temperature	-5°C - +40°C (Non-Freezing)
Operating Humidity	85%RH maximum (Non-Condensing)

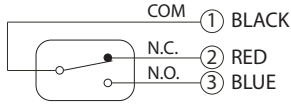
■ SETTING THE PRESET VALUE

1. Reset the counter first by pushing the reset button ("R"). Make sure that all the digits are alligned in all "0" position.
2. While depressing the preset lock button (Black button), set each digit by pressing the corresponding digit buttons (White button). Notice that the small preset display (Yellow on Black background) will change and increment for every push of the white buttons.
3. After the desired preset value is set, release the preset lock button.
4. Reset the counter once more before start of use.
5. Notice that after reset the count display will show all "0" and the preset display will show the preset value.

CONNECTION

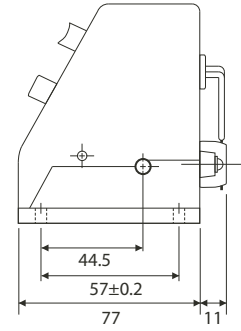
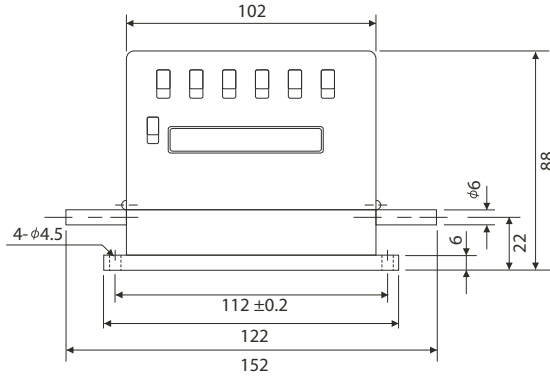
For Manual Reset type

This type has a built-in Microswitch. Refer to below diagram for the proper connection with respect to the Microswitch function.

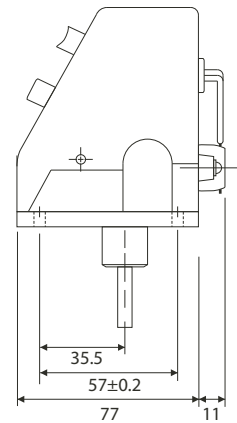
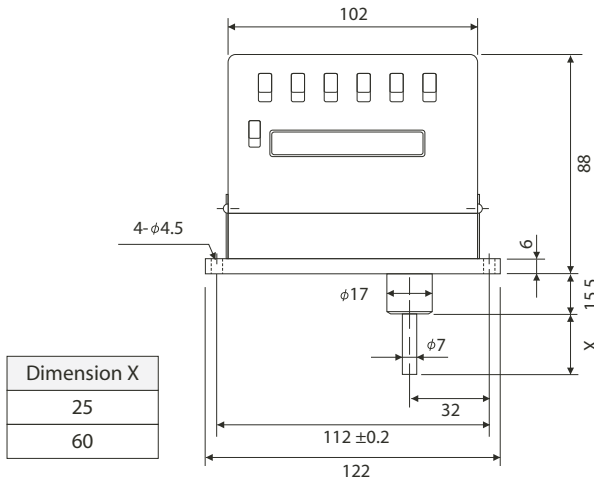


DIMENSIONS

RCP-15 (I)
RCP-15 (II)
RCP-25 (I)
RCP-25 (II)



RCP-15A
RCP-25A



This catalog was last revised Jun 15, 2015.
*Subject to change without prior notice.
All Rights Reserved, Copyright © 2015, LINE SEIKI CO., LTD.



LINE SEIKI CO., LTD.

Address : 37-7, Chuo-Cho, 2-Chome, Meguro-ku
Tokyo 152-0001 JAPAN

Contacts : Tel: +81-3-3716-5151 Fax: +81-3-3710-4552
E-mail: webtrade@line.co.jp

URL : <http://lineseiki.com/>