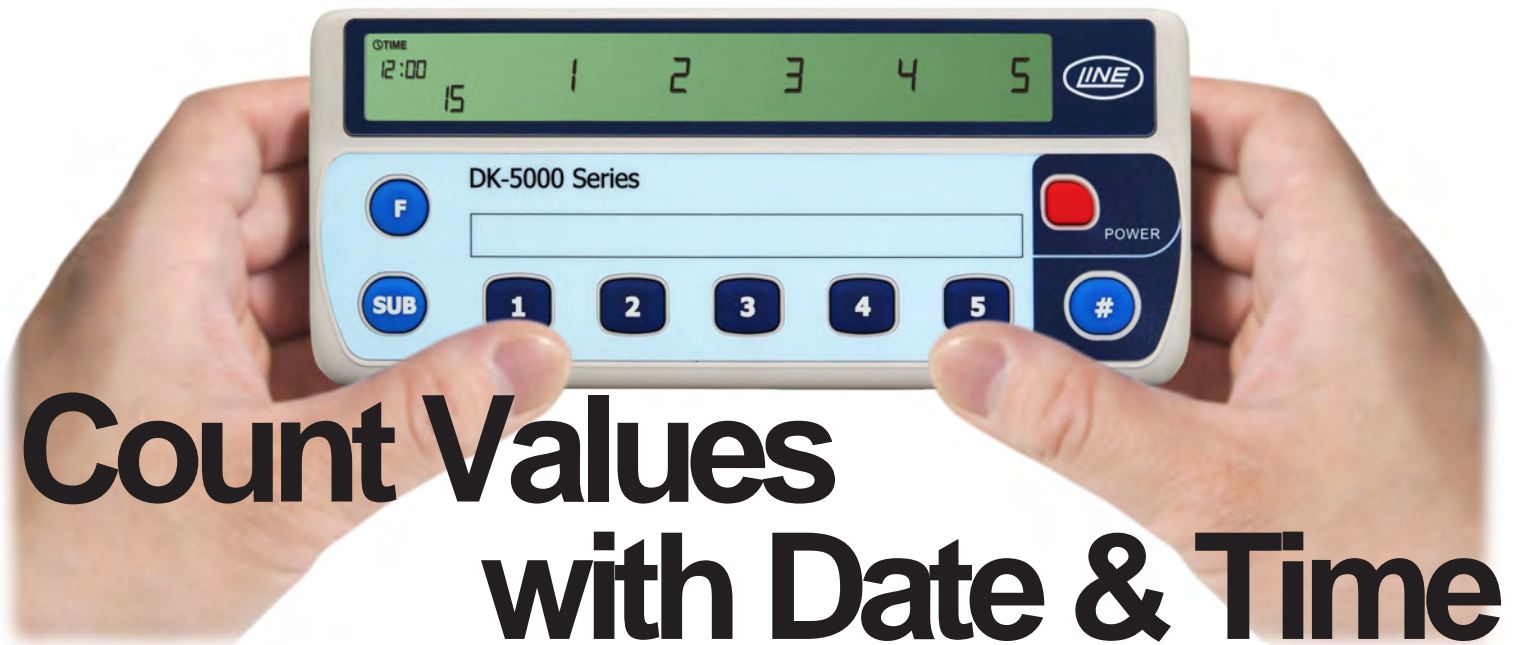


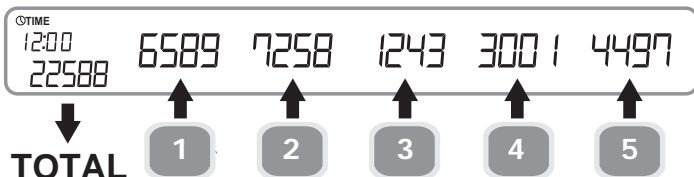
5 combined tally counter with timestamp

DK-5005A[⌚]



Count Values with Date & Time

Electronic tally device with five (5) independent counters.



This device can record the individual count values and the total count with a corresponding timestamp.

It can save up to 250 records in its memory.

Memory Recall Mode Display 1 (Count values)



Memory Recall Model Display 2 (Date & Time)



Recorded data is displayed and saved on the computer when the device is connected to the computer with USB cable.

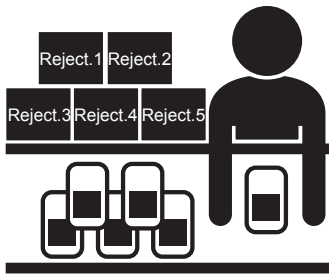
The saved data is editable with spreadsheet software.

Real-time display of count values is enabled on the computer.

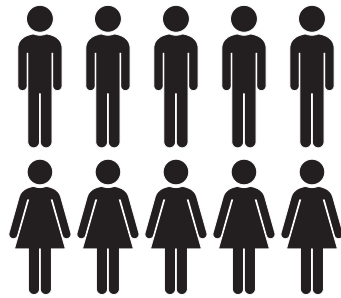


* The recorded data can be displayed on the device without connecting to a computer.

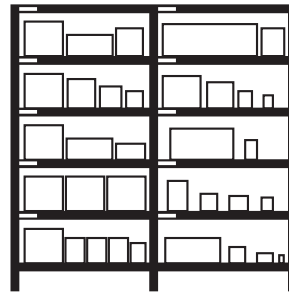
Applications



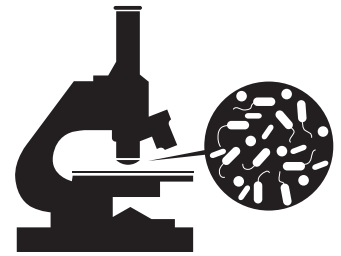
For counting defective items per each cause during inspection process



For counting attendees per each category (e.g. age and gender) at various events



For counting product inventories per each category or size in warehouses



For counting bacterial colonies in laboratories

Unique features of DK-5005A

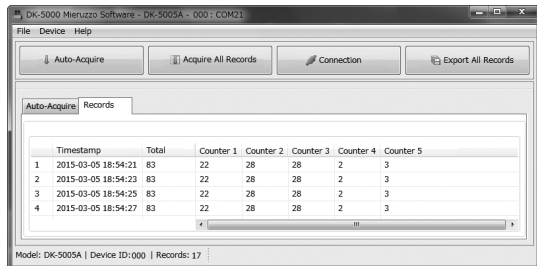
1. The device can save up to 250 records in its memory so that you need not write down on paper.
2. Date & Time is recorded when count values are recorded in its memory so that you can review them as time series data later.
3. It is easy to accumulate and edit with spreadsheet software in the case the count values are saved on the computer.

Software

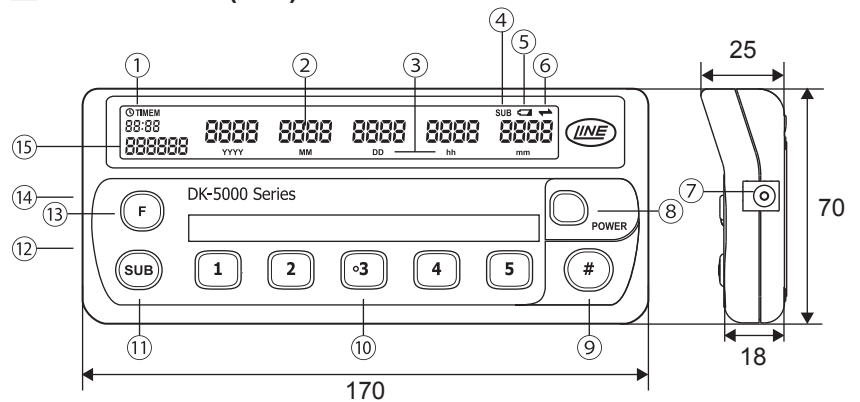
The companion software enables the user to use the following functions when the device is connected to the computer with a general-purpose USB cable.

- Real-time display of count values displayed on the device
- Download the data from the device
- Export the downloaded data to a .XLS or .CSV file

Display of software



Dimensions (mm)



- | | |
|--------------------------|-----------------------|
| ① Clock / Memory Display | ⑨ [#] Key |
| ② Count Display | ⑩ Count Key |
| ③ Date/Time Icon | ⑪ Subtract Key |
| ④ Subtract Icon | ⑫ Strap Hole |
| ⑤ Low Battery Icon | ⑬ Function Key |
| ⑥ Software Link Icon | ⑭ USB 2.0 Port |
| ⑦ 5.5 mm DC Jack | ⑮ Total Count Display |
| ⑧ Power Key | |

Specifications

Input Type	Rubber Key
Display Type	7-Segment LCD Display Counter (x5) : 7mm(H), Total Count : 5mm(H) Record Number / Time Display : 3.5mm(H)
Count Display	Internal : 0 - 99999(Display : 0 - 9999)
Total Count Display	0 - 999999
Clock Function	Year / Month / Day / Hour(24hour) / Minute / Second
Memory	250 records
Data Communication	USB micro-B (USB 2.0)
Power Source	AAA Battery x 4 pcs. USB Cable AC/DC Adapter
Battery Life	200 hour min. *
Operating Temperature	0°C - +50°C (non-freezing)
Storage Temperature	-10°C - +60°C (non-freezing)
Weight	Approx. 130g (battery & accessories not included)

* (under normal operating temperature using Alkaline type battery)

Accessories

Instruction Manual

* Batteries are not included.

Please prepare AAA batteries by yourself.

Data Communication Software

Downloadable from

<http://www.lineseiki.com>

Options

USB-02 (USB Cable)

* A general-purpose micro B-to-A USB cable can be used.

AC/DC ADAPTER (DK-5)

* Please use Line Seiki AC/DC Power Adapter.

