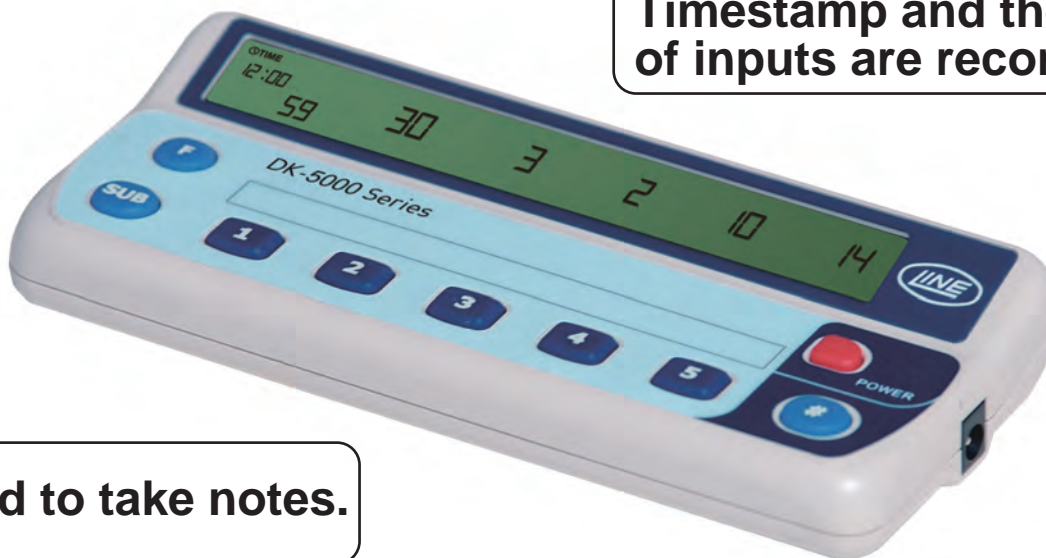


Timestamp Recorder with 5 input keys

# DK-5005<sup>B</sup>

Timestamp and the number of inputs are recorded.



No need to take notes.

## Digitalization of Manually Input Data

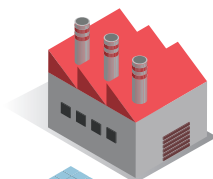
Date & Time is recorded whenever the keys are pressed.

The number of times the keys are pressed is displayed.

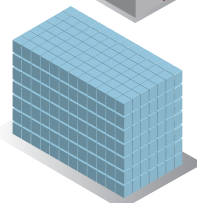
Start time and End time are recorded.

Analysis of the saved data is enabled on the computer.

Useful at  
production sites



Useful at  
various events



[ DK-5000 Mieruzzo Software ]

Auto-Acquire		2015-04-01 12:00:00	2015-04-02 12:00:00	2015-04-03 12:00:00
Timestamp	Total	Input1	Input2	Input3...
61	2015-04-01 12:00:00	59	30	3 2
Timestamp	Total	Input1	Input2	Input3...
1	2015-04-01 11:00:00	0	0	0 0
2	2015-04-01 11:01:00	1	1	0 0
3	2015-04-01 11:02:00	2	2	0 0
4	2015-04-01 11:03:00	3	3	0 0
5	2015-04-01 11:04:00	4	4	0 0
6	2015-04-01 11:05:00	5	4	1 0
7	2015-04-01 11:06:00	6	5	1 0
8	2015-04-01 11:07:00	7	5	1 1
9	2015-04-01 11:08:00	8	6	1 1
10	2015-04-01 11:09:00	9	6	2 1
11	2015-04-01 11:10:00	10	6	2 1
12	2015-04-01 11:11:00	11	7	2 1
13	2015-04-01 11:12:00	12	7	2 1
14	2015-04-01 11:13:00	13	7	2 2

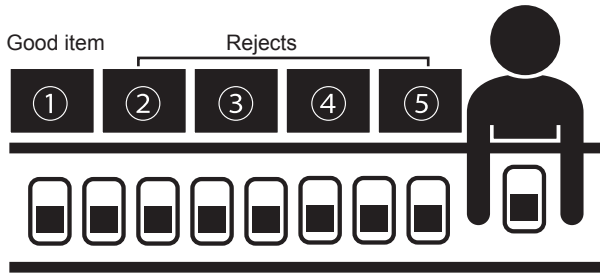
Start Time : 2015-04-01 11:00:00  
End Time : 2015-04-01 12:00:00  
Number of Logs : 61

Export Record



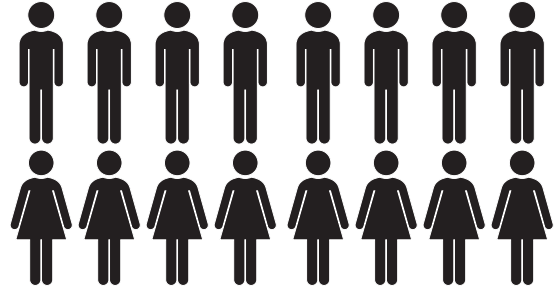
## Applications

[Inspection process at production sites]



Products are sorted into good items and defective ones and inputted. The defective products are sorted into each cause. The timestamp and the number of occurrence times are recorded when defective products occurred.

[At various events, shops, facilities and etc.]



Distribution and tendency in the certain period can be grasped by recording the input time and the number of people per each age and gender.

## Unique features of DK-5005B

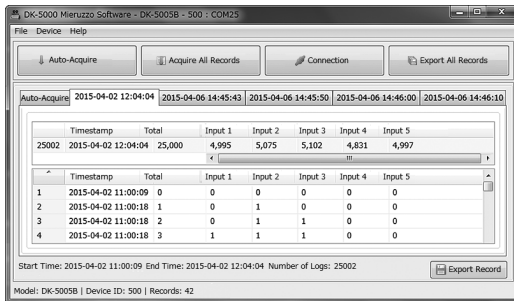
1. The timestamp is recorded whenever the keys are pressed so that you can review the distribution of input time.
2. The completion time and the quantity of products, and the occurrence information of defective products can be used as a daily report.
3. The data exported from the computer can be used as traceability information.

## Software Windows computer is required to view record details.

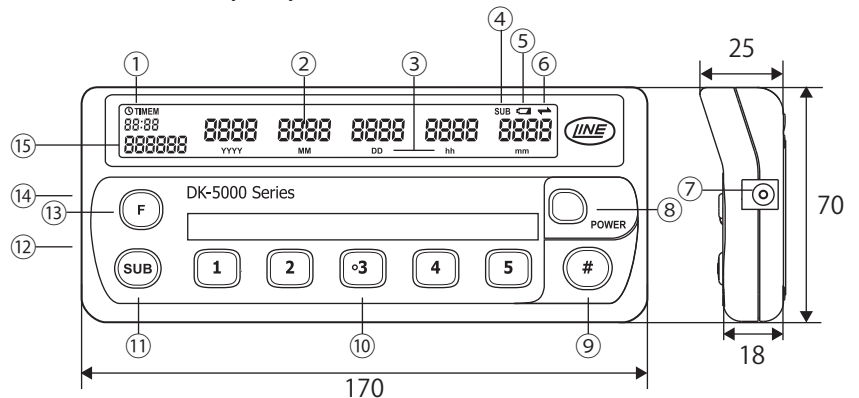
The companion software enables the user to use the following functions when the device is connected to the computer with a general-purpose USB cable.

- Real-time display of the number of inputs displayed on the device
- Download the data from the device
- Export all tabs or individual tab of downloaded data to a .XLS or .CSV file

### Display of software



## Dimensions (mm)



- |                          |                       |
|--------------------------|-----------------------|
| ① Clock / Memory Display | ⑨ [#] Key             |
| ② Input Display          | ⑩ Input Key           |
| ③ Date/Time Icon         | ⑪ Subtract Key        |
| ④ Subtract Icon          | ⑫ Strap Hole          |
| ⑤ Low Battery Icon       | ⑬ Function Key        |
| ⑥ Software Link Icon     | ⑭ USB 2.0 Port        |
| ⑦ 5.5 mm DC Jack         | ⑮ Total Input Display |
| ⑧ Power Key              |                       |

## Specifications

<b>Input Type</b>	Rubber Key
<b>Display Type</b>	7-Segment LCD Display Input (x5) : 7mm(H), Total Input : 5mm(H) Record Number / Time Display : 3.5mm(H)
<b>Count Display</b>	Internal : 0 - 99999(Display : 0 - 9999)
<b>Total Count Display</b>	0 - 999999
<b>Clock Function</b>	Year / Month / Day / Hour(24hour) / Minute / Second
<b>Memory</b>	Maximum number of key inputs : 48,000 inputs (Built-in flash memory)
<b>Data Communication</b>	USB micro-B (USB 2.0)
<b>Power Source</b>	AAA Battery x 4 pcs.   USB Cable   AC/DC Adapter
<b>Battery Life</b>	200 hour min. *
<b>Operating Temperature</b>	0°C - +50°C (non-freezing)
<b>Storage Temperature</b>	-10°C - +60°C (non-freezing)
<b>Weight</b>	Approx. 130g (battery & accessories not included)

\* (under normal operating temperature using Alkaline type battery)

## Accessories

Instruction Manual

\* Batteries are not included.

Please prepare AAA batteries by yourself.

## Data Communication Software

Downloadable from

<http://www.line-seiki.com>

## Options

### USB-02 (USB Cable)

\* A general-purpose micro B-to-A USB cable can be used.

### AC/DC ADAPTER (DK-5)

\* Please use Line Seiki AC/DC Power Adapter.

This catalog was last revised May 29, 2015.  
Contents are subject to change even without prior notice.  
All Rights Reserved, Copyright © 2015, LINE SEIKI CO., LTD.



**LINE SEIKI CO., LTD.**

Head Office 37-7 Chuo-cho, 2-Chome Meguro-ku,

Tokyo JAPAN 152-0001

Contact

TEL:03-3716-5151

FAX:03-3710-4552

E-mail

webtrade@line.co.jp

URL

<http://www.line-seiki.com>